



**morton.**

**Chippendale** 601/8 Central Park Avenue



Perfectly positioned within the award-winning 'Connor' building, this architect designed home within the award winning Central Park, represents an accurate example of a 1 bedroom floor plan. Offering a separate master suite with floor to ceiling full length built-in wardrobes and floor to ceiling north facing window.

- North-facing aspect with leafy park aspect overlooking Chippendale Green
- A fresh and bright interior designed by Smart Design Studio
- Bright living and dining featuring sleek timber floors
- Covered balcony offers a private space for enjoying outlooks
- Galley-style kitchen with gas cooktop plus an internal laundry
- Stunning bathroom with unique detailing and premium fixtures
- Common rooftop terrace with views, barbecues and heated spa
- Impressive lobby entrance, concierge services, on-site gym
- Ducted air-con, concierge, video intercom and storage cage
- Exceptional investment property in a sought-after setting

**Auction**

Saturday, 01 Jun 2024, 2:30 pm

**View**

As advertised or by appointment

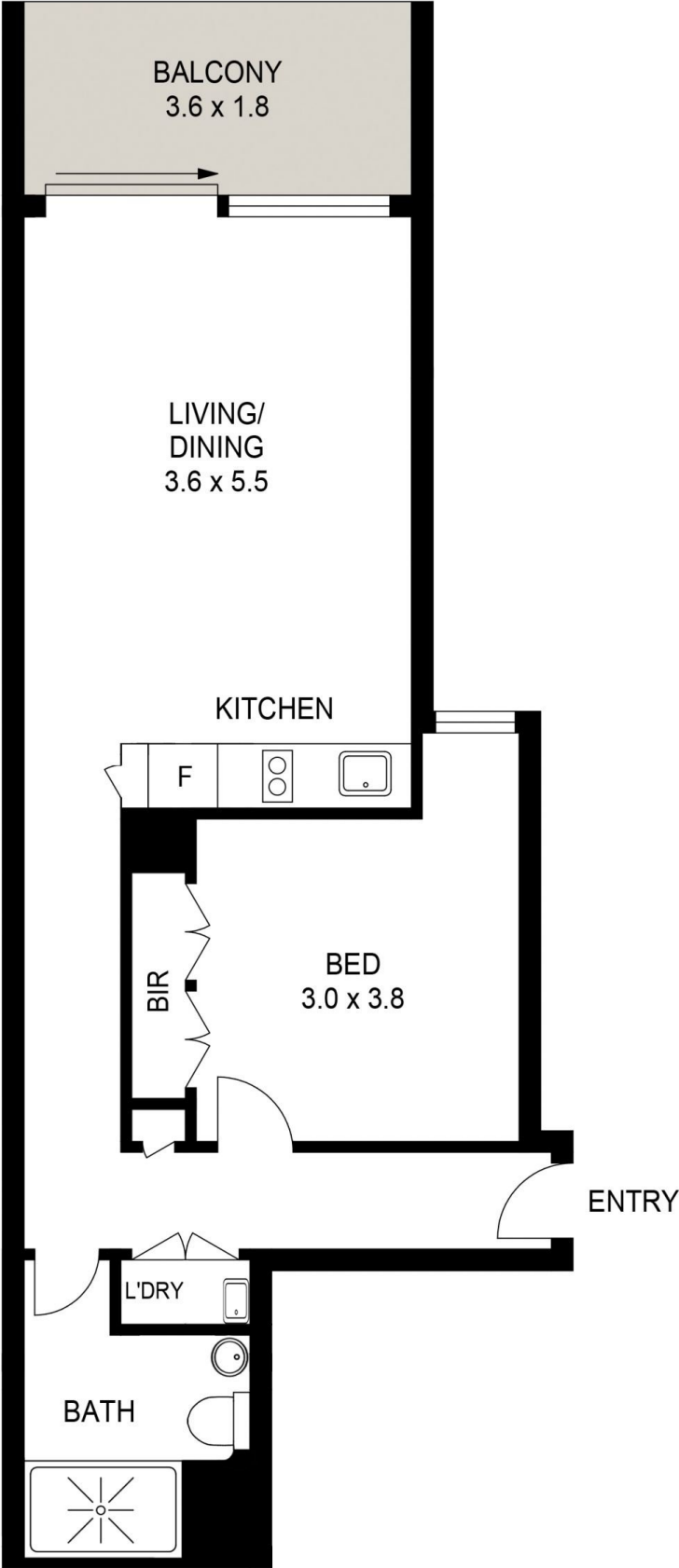
**Agent**

**James Crow**

📞 0410 593 057

✉️ james@morton.com.au

**morton.com.au**



PLANS SHOWN ONLY INDICATIVE OF LAYOUT. DIMENSIONS ARE APPROXIMATE.

