



morton.

Luddenham 11 Woodhall Place

 6  4  7

This large single storey property, built for multi-generational living, is privately positioned away from the road, and sits on over an acre of land. Backing onto a Twin Creeks golf course and surrounded by mature landscaped gardens, this contemporary home with a flowing floorplan and quality finishes throughout, provides low maintenance, luxurious living for a discerning family.

- Spacious 5 bedroom home with additional studio at the back
- Butler's pantry off kitchen with counter space, and plenty of storage
- All-season alfresco living and dining with fully equipped outdoor kitchen
- 120,000-litre underground water tank for year-round water supply
- Full irrigation system for lush lawn, controlled from mobile app
- Electric side gate leading to rear 2nd 4 car garage/workshop with clearance for boat or motorised home
- Rear Pergola with remote control louvers for entertainment



morton.com.au

View



As advertised or by appointment

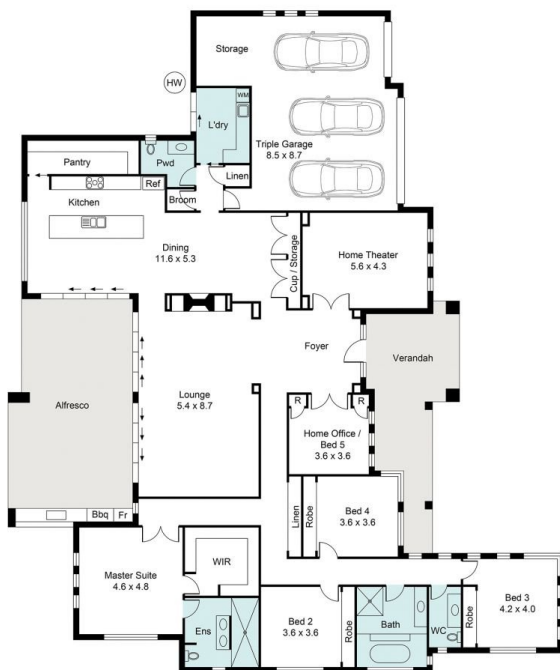
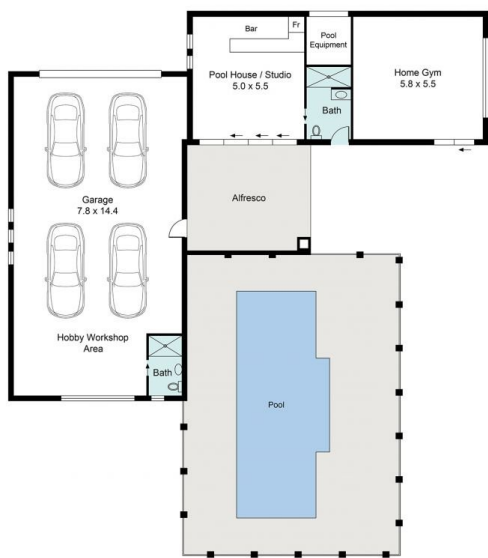
Agents

Konstantin Melnikov

 0421 540 424
 konstantin@morton.com.au

Ferenc Goemoeri

 0447 025 423
 ferenc@morton.com.au



11 Woodhall Place, Luddenham



Every care has been taken to verify the accuracy of the details and dimensions in this property plan. Prospective purchasers are advised to make their own enquiries to satisfy themselves in all respects. The plan is a representation only and is not necessarily to scale.