



morton.

Dulwich Hill 27/1-9 Terrace Road

 2  1  1

Light, bright and breezy, this Dulwich Hill unit is centrally located with the light rail at your doorstep. With two bedrooms this unit would appeal to anyone wanting a fabulous Inner city lifestyle. Offering space and sunlight throughout, this immaculate unit is a must to inspect.


- Open plan living and dining area flowing onto a private balcony
- Large kitchen with modern appliances, ceiling fans throughout
- Two well sized bedrooms, one with large walk-in wardrobe
- Stylish bathroom with second toilet and ample storage
- Light colour scheme with new floating floorboards
- Secure car space

View

As advertised or by appointment

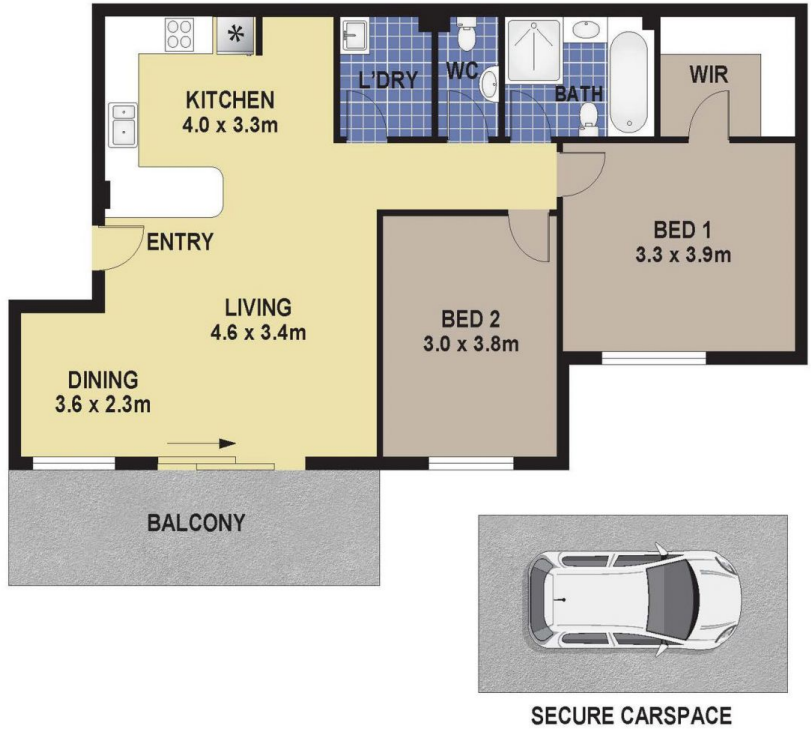
Agent

Alexander Karabanov

 0409 896 152

 alexander.karabanov@morton.com.au

morton.com.au



UNIT 27/1-9 TERRACE ROAD, DULWICH HILL

DISCLAIMER

PLANS SHOWN ARE FOR MARKETING PURPOSES ONLY, ALL DIMENSIONS ARE APPROXIMATE AND NOT TO SCALE. THEY ARE SUBJECT TO ERRORS AND INACCURACIES AND NO LIABILITY WILL BE ACCEPTED. INTERESTED PARTIES SHOULD MAKE THEIR OWN ENQUIRIES.