



morton.

Ryde E604/3 Lardelli Drive

 3  2  2

Welcome to the award-winning Putney Hill Estate where this impeccably presented apartment boasts light-filled interiors, large windows, high ceilings, and a serene leafy outlook. Rarely do three-bedroom residences become available in this building, not to mention the 20 sqm terrace perfect for entertaining and relaxation.

- Prime corner position with tranquil North-East facing leafy vistas
- Floor-to-ceiling glass windows capture abundant natural light
- Expansive 20 sqm entertainers' balcony seamlessly connects indoor and outdoor living
- Modern kitchen featuring sleek Caesarstone benchtops, gas cooking, and quality appliances
- Spacious bedrooms, with the main bedroom offering a walk-in wardrobe, ensuite, and bath tub
- Chic bathrooms with floor-to-ceiling tiles
- Cleverly integrated study nook, ideal for working from home
- Internal laundry, security intercom, and direct lift access
- Ducted air conditioning throughout

morton.com.au

Auction

Tuesday, 18 Jun 2024, 6:00 pm

View

As advertised or by appointment

Agents

Ian Qiu

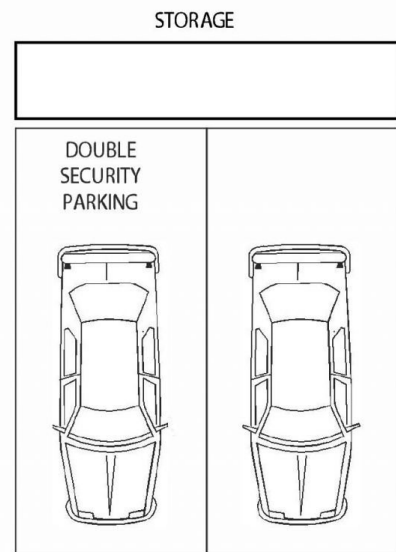
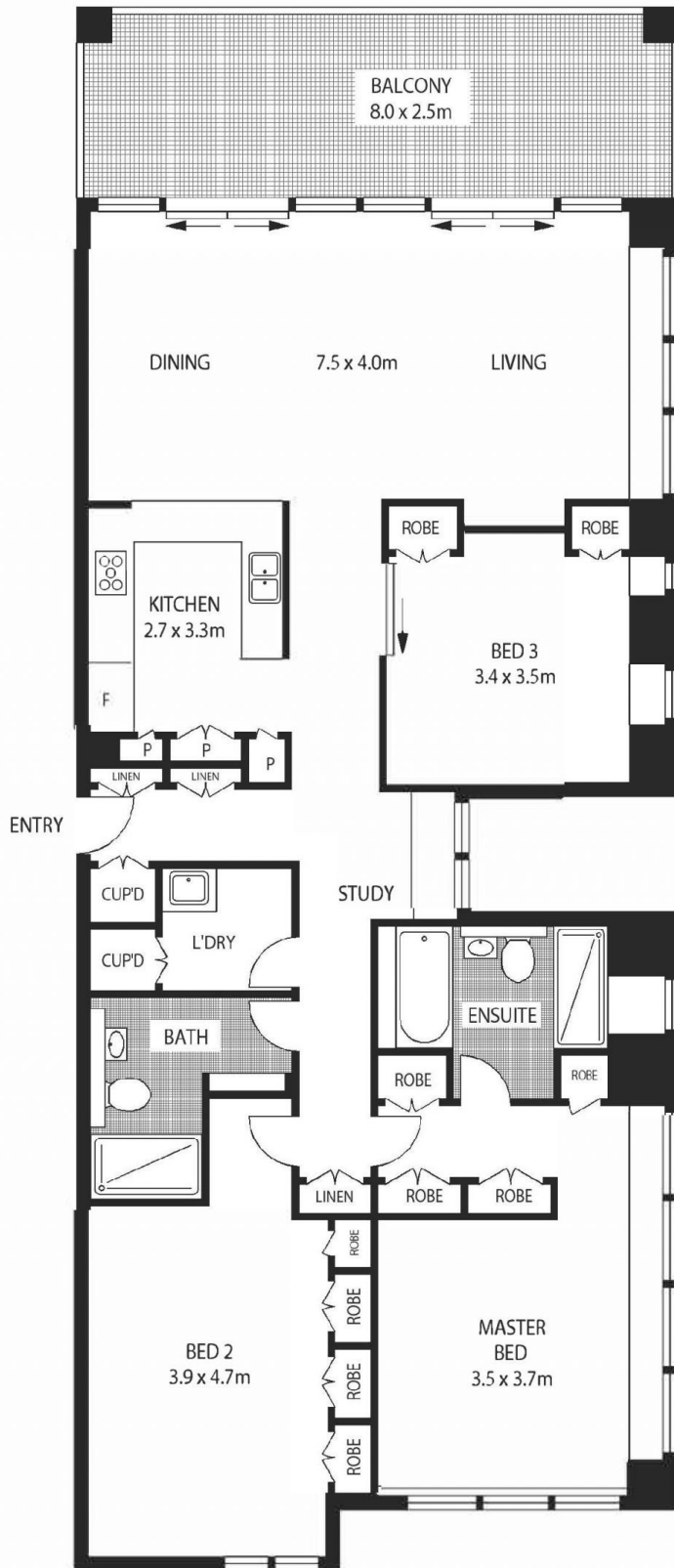
 0447 696 425

 ian@morton.com.au

Naomie Texier

 0439 247 710

 naomie@morton.com.au



604e/3 LARDELLI DRIVE

RYDE

SCAPE Floor Planning Disclaimer: This floor plan is conceptual only. It is provided for illustrative purposes only and should not be relied upon. We make no guarantee as to the correctness of this plan. All interested parties should make and rely on their own enquiries in determining the accuracy of the information contained in this floor plan.